

The **GestureTek® Immersive Therapy Cart** is a complete mobile therapy solution that provides over 30 different immersive applications and delivers them directly to the patient, anywhere in a care facility. The cart can be used in the procedure recovery room, patient room, therapy room or in common areas. The patient may be in a bed, a chair or a standing position, giving patients the opportunity to engage in music therapy, become active in virtual play or immerse themselves in a soothing sensory environment. The interactive applications bring a whole new element of enjoyment and participation to any therapy program.

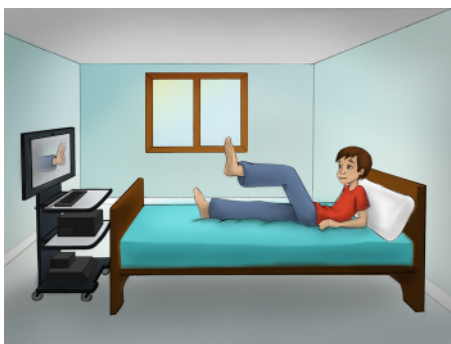
The Cart

Delivered on a rechargeable medical cart, the therapy system is durable and easy to move from patient to patient. The use of GestureTek's gesture-control system ensures that all patient movements are low impact and that patient cross-contamination is virtually eliminated.

The Experience

Using GestureTek's patented gesture-control technology, the patient does not have to wear or hold a remote device or be attached to a computer to experience the latest immersive therapies. Whether relaxing in a virtual sensory environment, engaging in immersive play, or exploring the interactive music therapy world, the patient receives low-impact activation, motivation and stimulation.

Immersive technology has been the subject of extensive research, and GestureTek has been at the forefront of this research, working with a number of universities around the world on the development of gesture-based applications. Medical research confirms that virtual therapy is beneficial for persons with cognitive and physical disabilities, including those with cerebral palsy, autism, Alzheimer's and dementia, and for people recovering from stroke, traumatic brain injury and other conditions.



GestureTek technology is protected under numerous comprehensive patents in the United States and other countries. U.S. patents include 5,534,917 (Video image based control system), 7,058,204 (Multiple camera control system) and 7,227,526 (3D-vision image control system). All trademarks and registered trademarks are the property of their respective owners.

The **Immersive Therapy Cart** incorporates **GestureTek's** patented gesture-control technology, allowing patients to interact with any virtual world or environment by simply moving their body.

Benefits to Patient

1. Full suite of over 30 applications maintains patient interest.
2. Research has shown that Immersive Therapy can provide an important role in pain diversion for many patients.
3. GestureTek applications have been proven to provide important patient distraction, motivation and engagement.
4. Motion-based software means unencumbered operation and eliminates patient cross-contamination.
5. Separate dedicated programs for delivering the benefits of sensory stimulation and music therapy.
6. GestureTek's flexible software can be customized to provide cause/effect outcomes even for patients with limited mobility and range of motion.

Product Group	Playmersion <i>Gesture-controlled Immersive Play</i>	My Music World <i>Music Making Fun</i>	Sensory World <i>Relaxation and Sensory Stimulation</i>	My Music Composer <i>In-Depth Music Instruction and Therapy Program</i>
Titles/Features	Coconut Juggler Ninja Orbosity Tilt Soccer Volleyball Sharkbait Wizards Cavern	Farm Animals Dance Musical Instruments Horns	Balloon Fun Autumn Leaves Undersea World Misty Lake Grid Break Soccer Time Lily Pond Cloudy Day Flower Power Candy Scatter	Ten instruments Four pre-loaded scales Twelve songs at Beginner and Advanced levels Independent Play and Follow Along options

About GestureTek

GestureTek Health is a business unit of GestureTek Inc.—the world leader in computer vision for gesture-based control of interactive display systems. GestureTek's patented video gesture control software lets users control interactive content, manipulate special effects, access information or immerse themselves in an interactive 3-D virtual world - simply by moving their hands and body. GestureTek Health delivers the benefits of virtual therapy and gesture control to patients and care givers. Headquarters are in Sunnyvale, California, with additional offices in Toronto and Ottawa.



GestureTek technology is protected under numerous comprehensive patents in the United States and other countries. U.S. patents include 5,534,917 (Video image based control system), 7,058,204 (Multiple camera control system) and 7,227,526 (3D-vision image control system).

All trademarks and registered trademarks are the property of their respective owners.

